



Megan Lacy Watson aged 10 cuts the ribbon and officially opens Rocket Park.

Rocket Park takes off...

A brand new play area was officially opened by the children of Lytchett Matravers Primary School on Friday 28th September at Lytchett Matravers Recreation ground.

The new facilities have been provided by the Lytchett Matravers Parish Council. In recent years, the council has invested £300,000 in village projects to improve children and youth facilities in Lytchett Matravers; most of the money has been raised by villagers and councillors from external grants and donations. Councillor Julie Dyball, the driving force behind this project says, "Rocket Park aims to provide a range of equipment designed to challenge all children, whilst providing play opportunities for pre-schoolers and those with limited mobility. We have shown that even in a climate of austerity, great things can be achieved with a small team of dedicated volunteers.

We wanted to create a destination play area that the children of our village can be proud of for many years to come. The skate park and now a zip line too means that we can offer children of all ages a great play experience, whether they live here or travel to Rocket Park from elsewhere".

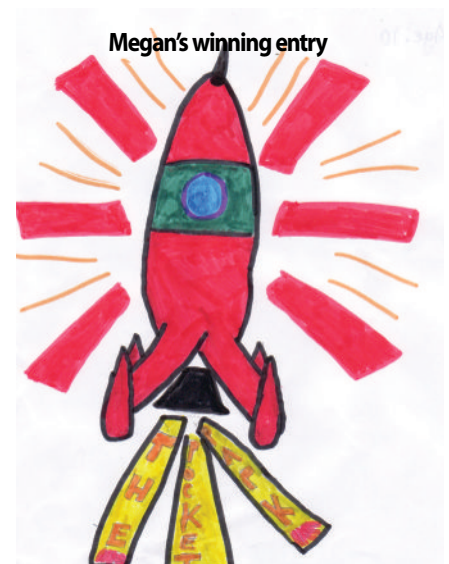
The project has been predominantly funded by grants, including £15,000 from Viridor Credits Environmental Company.

Rocket Park competition winner

The honour of cutting the ribbon and officially opening Rocket Park was giving to the prize winner of a competition organised by Lytchett Matravers Primary School.

Local parish councillors judged the competition which had a very high standard of entries. However, one entry clearly stood out to the judges, and Megan Lacy Watson aged 10 was judged the winner. Megan's entry can be seen to the right of the article.

Megan's rocket will be used as the logo for Rocket Park and has been printed up on the Friends of Rocket Park tee shirts. We are now looking for volunteers to join the newly formed "Friends of Rocket Park" team.



This issue	
Rocket Park	P.1
Proposed Navitus Bay Wind Park	P.2
Carnival Help	P.2
Village Life	P.3
Memorial Green Renovation	P.3
Grass Cutting in Our Village	P.3





Proposed Navitus Bay Wind Park

Two councillors recently attended a briefing on the above and this is their summary of it, which may be of interest. More information can be obtained using the contact details shown below.

In January 2010, the Crown Estate awarded Eneco 279 square miles of seabed to explore the most suitable place to locate a wind park with a capacity of at least 900MW.

The proposed Navitus Bay Wind Park wind park is located off the Dorset and Hampshire coast and to the west of the Isle of Wight and the water depth ranges from 20 to 50 metres. At the closest point the wind park will be 8.2 miles from Peveril Point in Swanage

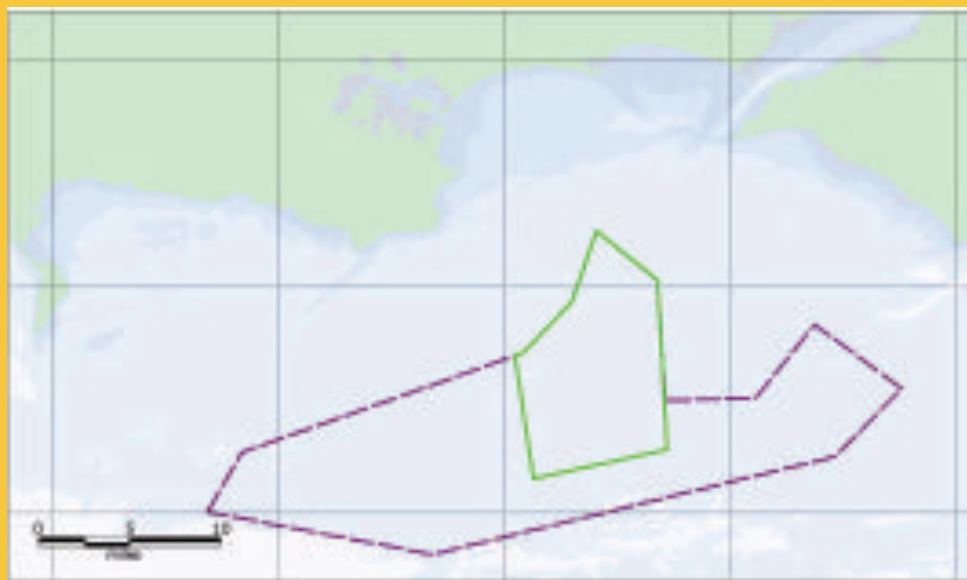
It has been concluded that a project of between 900MW and 1200MW of capacity could be located in the northern part of the awarded area, a site which covers 76 square miles. This is enough power to supply between 615,000 and 820,000 homes and will offset approximately 1,186,000 tonnes of CO2 emissions each year. The ultimate capacity and design of the proposed wind park will only be confirmed after comprehensive consultation with all interested parties.

Over the next two years, Eneco will be working closely with interested parties including statutory consultees and

undertaking site-specific surveys prior to bringing forward a development consent application for the offshore wind park. It is anticipated that, subject to obtaining the relevant consents, construction of the wind park will commence in 2016 and it is hoped that

the wind park will be fully operational by 2019. For further information contact Eneco: Telephone 0845 604 6730, Email info@enecowindoffshore.co.uk or www.navitusbaywindpark.co.uk

Keith Norris



A map of the area selected for development within the zone is shown above.

Lytchett Matravers Village Fayre - Request for Volunteers

After many years of faithful service, there has been a change in the Lytchett Matravers Carnival Committee and the Carnival will not be the same this year.

The new committee would welcome some more volunteers and ideas to help us with a traditional Village Fayre. This is likely to happen in May 2013. It will be a little different from recent years, but we very much hope that it will still be a good community occasion.

For more information or if you would just like to register your interest or support, please email michael.tomlinson@3paper.co.uk or call 01929459551.



Lytchett Link

Published by Lytchett Matravers Parish Council

2012 Flower Show Presentation

The annual Lytchett Matravers Flower Show is such an important and well supported event.

I was honoured to be asked to present cups and shields to the winners of the various classes, as Chairman the Lytchett Matravers Parish Council.

It is the standards and skills to exhibit their chosen class that is so important to the Flower Show's annual success.

For me, it has to be the children who steal the show when they shyly step forward to receive their awards.

We may now be the largest populated village in the Isle of Purbeck, but the events that are so important to our village community are still being successful and well supported.

Bob Miller Chairman



Lytchett Matravers Parish Council Chairman Bob Miller presenting the prizes at the 2012 Lytchett Matravers Flower Show

Memorial Green Renovation

Many Villagers had noticed that the Memorial Green lawn, and box hedges were looking very tidy and well maintained. However, the same could not be said for the railings and flag pole and a few other areas of the Memorial Green.

Parish councillor John Taylor along with volunteer Dave Clay rolled their sleeves up and set to work restoring the War memorial to its former glory. The War Memorial is an important part of the village and thanks to the hard work of Dave and John; we can all be proud of it.



Councillor John Taylor adding a touch of gold to the Memorial Green Fence.

Grass Cutting in Our Village



Grass cutting, and the lack of it, causes much angst to some residents. The following shows who is responsible for what!

Roadside verges, including the urban ones within the village, are the responsibility of DCC with the funding coming from their portion

of Council Tax. DCC said they would do 6 cuts per year.

Recreation Ground – the Northern (major) part of the field is leased to the Sports Club who employ and pay a contractor to cut the grass. However, when the contractor is on site to do the work for the Sports Club, it is very easy for them to also gang mow the Southern end of the recreation, which is the responsibility of the Parish Council. This is very cost efficient.

Foxhills Open space - this is done by a contractor who also does a lot of work for PDC. They won the work

by competitive tender, offering the Parish Council the best price.

Cemetery - this is done by a specialist contractor who also maintains a number of other cemeteries. Again, they won by competitive tender, offering the Parish Council the best price.

Allotments trackways, Memorial Green, edges of the Rec, edges of MUGA, around the bus stops, and other small bits around the village - all of this is done for the Parish Council by a local contractor who lives in the village and takes great care and pride in his work.

Chairmans' Update

WELCOME TO "ROCKET PARK"

It's ARRIVED!!

It's full of COLOUR, full of ADVENTURE and full of FUN.

The Parish Council is delighted to announce, the new play area at the Recreation ground has been completed and is already being enjoyed.

Dedicated fund raising by a small group of councillors and volunteers has raised seventy thousand pounds for this major and very important village asset that is already giving the youngsters many hours of fun and exercise.

During this most difficult period of

nationwide austerity this money has been sourced in just nine months and reflects how successful the Parish team has been working towards it's goal.

There have been many highs and lows along the path with one of the main disappointments being that none of the funding applications were fully granted. Just when it was thought that the project could not be achieved this year the Parish Council received a most generous donation of the balance needed to complete the job.

The Parish Council - on behalf of the whole village - owes a very special vote of thanks for this extremely generous gift.

The Parish Council would also like to thank Mrs Chess Potter for her help with project management without which, Rocket Park would not have been possible.

PARISH COUNCILLOR VACANCY

We should be a team of eleven Councillors, but we need one more to bring us to full strength. Have you ever considered being a Councillor?

The most important qualification is to want the best that can be achieved for your community. While the present team brings many skills to the table, experience has proven that what ever your speciality might be, it can be used to help improve life for your community, with the sense of achievement being your reward.

To apply simply send an email to the Parish Clerk at lytchettmatravers@dorsetparishes.gov.uk

Go on, just give it a go!

Bob Miller

Lytchett Link Directory

Parish Clerk Office 01202 624530 lytchettmatravers@dorsetparishes.gov.uk Tim Watton* Home details - for emergency use only 01202 632468

Parish Council Website: www.lytchettmatraverspc.org E-Mail: lytchettmatravers@dorsetparishes.gov.uk

Parish Council

Alf Bush The Shooting Box, Middle Road BH16 6HJ alfbush@hotmail.co.uk 01202 622500

Bob Miller Harbour Lights, Burbidge Close BH16 6EG miller.web@virgin.net 01202 622177

Cindy Wood 2 Lions Court Wimborne Road BH16 6HQ cindy.wood@winchester.ac.uk 01202 621673

Martyn Colvey 135 Wareham Road BH16 6DZ martyn@colvey.tv 01202 631231

Julie Dyball Maple Lodge, Burbidge Close BH16 6EG julie@dyball.com 01202 631438

Ian Matland Greenfields Farm, Loop Farm Road, Lytchett Matravers, Poole, Dorset, BH16 6BU ian@greenfields.biz 01258 857101

Keith Norris 18 Charborough Close BH16 6DH keithanorris@hotmail.co.uk 01202 631409

Patrick Talbot Linden Cottage, Wimborne Road BH16 6HQ bempad@talktalk.net 01202 623766

John Taylor 10 Dillons Gardens BH16 6DW john.taylor01@aol.com 01202 624174

Elizabeth Wilson 4 Glebe Road BH16 6EH wizandliz@tesco.net 01202 630160

Signatories Chairman Bob Miller, Vice Chairman Alf Bush, Julie Dyball

COMMITTEES

Environment and Highways Cllr E Wilson (Chairman), J Dyball (Vice Chairman), Cllr M Munford, Cllr K Norris, Cllr P Talbot, Cllr R Miller.

Finance and Policy Cllr K Norris (Chairman), Cllr Alf Bush (Vice Chairman), Cllr M Colvey, Cllr R Miller, Cllr J Taylor, Cllr C Wood.

Planning Cllr J Dyball (Chairman), Cllr R Miller, Cllr E Wilson, Cllr P Talbot, Cllr C Wood (Vice Chairman).

Note: The Chairman and Vice Chairman of the Parish Council are ex officio members of all committees.

District Councillors

John Taylor, 10 Dillons Gardens BH16 6DW 01202 624174

Peter Webb, Old Park Farmhouse, Dolmans Hill BH16 6HP 01929 459232

County Councillor

F.H. Drane, 4 Martingale Close, Upton, BH16 5ST 01202-385114

Cllr Drane and Taylor hold a surgery first Friday of the month in the Library.

Important Numbers

Police Community Support Officers

PC1813 Jonathan Stuart PCSO 5344 Luke Taylor 101 / 07825 521900

Only dial 999 if a life is in danger or a crime is in progress

Purbeck District Council Careline (to report noise and other nuisances) 01929 554555

Time Table of Full Council Meetings

Monday 15th October

Monday 19th November

Monday 17th December

Monday 21st January

Monday 18th February

Monday 18th March

Meetings will take place at the Lytchett Matravers Primary School Hall commencing at 7.30pm.

Planning Committee meetings will be held in the Scout Hut on Recreation Field. Agendas are displayed on the parish notice boards and available on the website. Members of the public and the press are welcome to attend all meetings and during full Council Meetings up to half an hour will be allowed at the commencement of the meeting (i.e. Immediately after 7.30pm) for members of the public to raise matters of concern to them.

Lytchett Matravers website...

www.parishcouncil.lytchettmatravers.org.uk/

Facebook: Lytchett Matravers

Twitter: @lytchmatravers

'CLARENCE' - Dorset County Council (for reporting road related problems) 0800 232323

Doctors' Surgery - Heath Cottage, High Street 632764

Lytchett Pharmacy - Next to Tesco's 631815

Meals on Wheels (WRVS) - 677480

Village Hall Bookings - 632241

Designed and edited by John Taylor © Copyright Lytchett Matravers Parish Council 2012

The contents of this magazine are protected by copyright of the Parish Council and/or the individual contributors and may not be reproduced in any form without the written prior permission of the publisher.

Published by Lytchett Matravers Parish Council

NO LIABILITY IS ACCEPTED FOR THE CONTENT OF THIS MAGAZINE OR FOR THE SENTIMENTS EXPRESSED BY ITS CONTRIBUTORS

Lytchett Link

Published by Lytchett Matravers Parish Council