

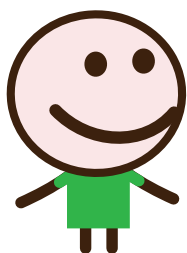


Lytchett Matravers Neighbourhood Plan

Consultation

**Have
your
say**

8th June -
19th July
2015



There will be open sessions at Lytchett Matravers Library where residents will be able to visit, review the plan and discuss with members of the Lytchett Matravers Neighbourhood Planning Group.



The sessions are planned as follows, but please check on www.lmnp.org.uk as the consultation progresses:

Saturday July 4th 10am to 12am

Tuesday July 7th 3pm to 5pm

Friday July 10th 5pm to 7pm

Tuesday July 14th 3pm to 5pm

Thursday July 16th 10am to 12am

In respectful memory of **Bob Miller**

24th April 1938-16th May 2015



It is with great sadness that I report the death of former Parish Councillor Bob Miller.

Bob was a very loyal and active member of Lytchett Matravers Parish Council. He served between July 2006 and June 2014, during which period he headed the Environment and Amenities Committee and also acted as deputy Chairman. He served as Chairman for three successive years, 2011-12, 2012-13 and 2013-14.

Bob was particularly interested in improving the village amenities and felt strongly about putting something back into the Community. Having received excellent service from the NHS he assisted with a car scheme for a number of years, ferrying patients to and from hospital. This community spirit was also reflected in his work for the

RNLI, for whom he worked for 22 years, firstly as a driver and then as a fund raiser.

Bob and his wife Angela have lived in Lytchett Matravers for the past 30 years. Bob enjoyed gardening and was a doting grandfather to 8 grandchildren. He loved Dorset and its history, and a favourite pastime was driving around the county discovering new places. He was also a keen traveller, visiting family in the USA on a regular basis.

My memories of Bob are of a man of warmth and good humour, a skilful communicator and highly effective Chairman of the Parish Council. I feel privileged to have known him. He will be greatly missed.

Cllr Liz Wilson

LITTER PICK – Saturday 4th July at the Rec car park 10 am

Our Litter Pick on the 14th March was the most successful to date as for the first time there were enough volunteers to cover all of the major routes into the village plus other busy roads.

To keep the momentum going please join us on Saturday 4th July at 10am. Safety guidance will be given and we have a supply of High-Vis vests and Litter Pickers to issue but use your own if you have them. Bring your own gloves! **Keith Norris**

Lytchett Matravers Flower and Craft Show 2015

**Lytchett Matravers Village Hall
Saturday 1st August 2015 in the
afternoon**

Cream teas in the Blanchard Room

Message from Your Lytchett Matravers Neighbourhood Planning Group

Lytchett Matravers Neighbourhood Planning Group wants the people from the village to have the opportunity of a voice in how their village will grow and develop over the next 15 to 20 years. The draft plan describes the community's vision for the future of the parish, where we should invest for the future of the village and how to provide village residents with a voice in the planning process.

It is a critical aspect of the Plan process that all residents have had an opportunity to contribute and share their ideas. This Plan will only work if it reflects the central thoughts of the majority of residents.

So use this opportunity to visit the website (www.lmnp.org.uk) and review the plan or come to one of the library sessions to talk to one of the planning group.

Plan process that all residents have had an opportunity to contribute and share their ideas. This Plan will only work if it reflects the central thoughts of the majority of residents.

We know that our ideas will be subject to national and district policies, which will continue to change from time to time, but the village needs a clear set of objectives in order to deal with that changing environment. Without those clear objectives we will not have the focus to achieve our target.

What is a Neighbourhood Plan?

The purpose of Neighbourhood planning is to enable communities to play a much stronger role in shaping the areas in which they live and work and in supporting new development proposals. This is because unlike the parish, village or town plans that communities may have prepared in the past, a neighbourhood plan forms part of the development plan and sits alongside the local district plan prepared by the local planning authority; for example the Purbeck District Council Local Plan (2012). Decisions on planning applications will be made using the Local Plan and the Neighbourhood Plan.

Why does Lytchett Matravers need a Neighbourhood Plan?

The review of the Purbeck Local Plan Part 1 (2012) is underway and is due to be published around the end of 2017.

We already know that, while those development areas are yet to be determined, Purbeck District Council has identified five (5) potential areas

in the green belt surrounding Lytchett Matravers that were included in the Partial Review Issues and Options consultation. It is possible that other areas could be included if those landowners approach Purbeck District Council with meaningful proposals.

The LMNPG estimates that if all these 5 areas were released it could lead to the building of up to 300 houses on top of the already planned 50 at Huntick Road and on top of any that are approved with respect to a new application for the Wessex Water site.

We already know that the inspector would like to see 'safeguarded land' in the green belt, although legally it is the local district council's decision and not the inspector's.

The Neighbourhood Plan sets out the development policies and strategic improvement initiatives that will need to be adhered to and taken into account for future development. In particular, the plan sets out to demonstrate why major growth is not appropriate for Lytchett Matravers.

1. Lytchett Matravers is surrounded by green belt for a reason as defined in the National Policy Planning Framework – it is to maintain open space between rural communities and urban conurbations.
2. Lytchett Matravers should not default to a dormitory to an urban conurbation with such significant imbalances between residential and employment/retail opportunities.
3. Expansion of the village is not sustainable with the current minimal level of public transport.
4. The Purbeck Local Plan Part 1 (2012) highlighted the village is not self-contained and that additional community facilities are needed. The village has lost several amenity spaces over the last few years, which is exacerbating this shortfall (the Lion Hall in Wimborne Road, the Salvation Hall in Eldons Drive and the British Legion Hall in Wimborne Road).
5. Purbeck District Council has designated Lytchett Matravers as a Key Service Village, which means the village should have services to support the surrounding villages. This despite acknowledging that the village already has a shortfall in infrastructure and services (see the plan for full details).

The LMNPG needs your input, your questions and your feedback. Visit the website (www.lmnp.org.uk) or the library to participate...

Willow Walk Opening Ceremony



The village has been waiting over 16 years for Willow Walk to be completed as the pathway was originally donated as part to the Foxhills development.

The project lay dormant since the building of the Foxhills Estate until former Councillor Julie Dyball took it on, working very hard to make sure the village got this great new pathway. The route is well used by the children on their way to Lytchett Matravers Primary School. It also gives residents in the area a new set of walks for exercise and dog walking.

The pathway was named by the children of the school who held a competition to pick the name. The walk was officially named and opened on Friday 19th June at a ceremony attended by councillors and local school children as well as Mr Simon France, Head of the Primary School. Also at the ceremony a plaque from Viridor was erected, they had generously given a substantial grant towards the costs of creating the walk.

John Taylor

Parish Council Supports Speed Monitoring in the Village



The Council receives many comments about speeding vehicles on our village roads. It has been keen to encourage a group who are making it difficult for those who use excessive speeds. Speed Watch was set up by some concerned villagers with the backing of the Police Service a couple of years ago.

It recently recruited more members at the PC's Connexions meeting in April. One of the bars to patrolling was sharing the necessary equipment with other villages and the police so they applied to the PC for a grant and are now buying their own. They note the index numbers of cars that are exceeding the limit and the police do the

follow up. They operate on different roads that meet the criteria for safe monitoring, with an emphasis on known speed runs.

Just to be fair the Council will in the future be publishing a schedule of where and when the monitoring is taking place, this can be found on the Council's website at:

Lytchettmatraverspc.org

If you'd like to join in this worthy cause please use 'contact' on the website as above or email to the Parish Clerk on lytchettmatravers@dorsetparishes.gov.uk

Martyn Colvey Chairman, Lytchett Matravers Parish Council

Round and round the garden....

Well, not quite, but if you see those two roundabouts in Landers Reach and feel you would like to take one or both of them under your wing, and prune, remove weeds, or even plant some new plants, then here's your chance.

Whilst there are some limitation on what is put there so as to not obscure visibility, I'm sure that with a relative small amount

of effort, their appearance could be improved upon, and your effort will be appreciated by many! The parish council would be able to provide some (limited) funding for plants.

Please contact the parish council in the first instance if you are interested. lytchettmatravers@dorsetparishes.gov.uk
Andrew Huggins

Lytchett Link Directory

Parish Clerk Office 01202 624530 lytchettmatravers@dorsetparishes.gov.uk Tim Watton 07824 829491 only to be used in an emergency.

Parish Council Website: www.lytchettmatraverspc.org

E-Mail: lytchettmatravers@dorsetparishes.gov.uk

Parish Council

Alf Bush (Vice Chairman) The Shooting Box, Middle Road BH16 6HJ alfbush@hotmail.com 01202 622500

David Bevan DBevan@hlfplanning.co.uk

Rob Carswell 10 Huntick Estate, Lytchett Matravers BH16 6EB rob@carswell.eu 01202 620500

Martyn Colvey (Chairman) 135 Wareham Road BH16 6DZ martyn@colvey.tv 01202 631231

Alan Cottman 75 The Spinney, Lytchett Matravers BH16 6AT Alan.cottman@gmail.com 07825681087

Andrew Huggins Trenchard Meadow, Lytchett Matravers BH16 6NA awahuggins@aol.com 01202 623939

Keith Norris 18 Charborough Close BH16 6DH keithanorris@hotmail.co.uk 01202 631409

John Taylor 10 Dillons Gardens BH16 6DW john.taylor01@aol.com 01202 624174

Peter Webb Old Park Farm House, Dolmans Hill BH16 6HP peter4lytchett@gmail.com 01929 459232

Elizabeth Wilson 4 Glebe Road BH16 6EH wizandlizz@tesco.net 01202 630160

Cindy Wood 2 Lions Court, Wimborne Rd BH16 6HQ Cindy.wood@winchester.ac.uk 01202 621673

COMMITTEES

Environment and Amenities Cllr E Wilson (Chairman), Cllr K Norris, Cllr J Taylor

A Huggins, R Carswell, A Cottman.

Finance and Policy Cllr K Norris (Chairman), Cllr M Colvey, Cllr Alf Bush (Vice Chairman),

Cllr P Webb Cllr C Wood.

Planning Cllr E Wilson, Cllr R Carswell, A Huggins, A Cottman, Cllr J Taylor, Cllr P Webb,

Cllr C Wood (Chairman).

Note: The Chairman and Vice Chairman of the Parish Council are ex officio members of all committees.

District Councillors

Peter Webb Old Park Farm House, Dolmans Hill BH16 6HP peter4lytchett@gmail.com 01929 459232

Wendy, Meaden Elderbrook, Peatons Lane, Lytchett Matravers, BH16 6HW cllr.meaden@purbeck-dc.gov.uk 07780 256277

County Councillor

Fred Drane, 4 Martingale Close, Upton, BH16 5ST 01202-385114 cllr.freddrane@ntlworld.com

Cllrs Drane hold a surgery first Friday of the month in the Library 4.00pm-5.30pm.

Time Table of Full Council Meetings

Monday 20th July

Monday 17th Aug

Monday 14th Sept

Monday 19th Oct

Monday 16th Nov

Meetings will normally take place at the Lytchett Matravers Sports Club Hall Recreation Field commencing at 7.30pm.

Agendas are displayed on the Parish Council notice boards.

Members of the public and the press are welcome to attend all meetings and some time is allowed at the commencement of the meetings (i.e. Immediately after 7.30pm) for members of the public to raise matters of concern to them.

Lytchett Matravers website...

www.parishcouncil.lytchettmatravers.org.uk/

Facebook: Lytchett Matravers

Twitter: @lytchmatravers

Designed and edited by John Taylor © Copyright Lytchett Matravers Parish Council 2012

The contents of this magazine are protected by copyright of the Parish Council and/or the individual contributors and may not be reproduced in any form without the written prior permission of the publisher.

Published by Lytchett Matravers Parish Council

NO LIABILITY IS ACCEPTED FOR THE CONTENT OF THIS MAGAZINE OR FOR THE SENTIMENTS

EXPRESSED BY ITS CONTRIBUTORS